

SL. NO.	LATITUDE	LONGITUDE
1	20°15'05.1" N	85°47'07.2" E
2	20°15'05.1" N	85°47'07.5" E
3	20°15'05.4" N	85°47'07.5" E
4	20°15'05.4" N	85°47'07.7" E
5	20°15'06.2" N	85°47'08.2" E
6	20°15'06.2" N	85°47'08.5" E
7	20°15'06.1" N	85°47'08.6" E
8	20°15'06.1" N	85°47'08.8" E
9	20°15'06.0" N	85°47'09.0" E
10	20°15'06.0" N	85°47'09.3" E
11	20°15'06.0" N	85°47'09.5" E
12	20°15'06.2" N	85°47'09.9" E
13	20°15'06.5" N	85°47'11.7" E
14	20°15'07.0" N	85°47'11.5" E
15	20°15'07.1" N	85°47'12.7" E
16	20°15'07.0" N	85°47'13.6" E
17	20°15'06.1" N	85°47'13.6" E
18	20°15'05.7" N	85°47'13.7" E
19	20°15'05.0" N	85°47'13.6" E
20	20°15'04.7" N	85°47'13.6" E
21	20°15'04.4" N	85°47'13.5" E
22	20°15'03.5" N	85°47'13.4" E
23	20°15'03.0" N	85°47'13.4" E
24	20°15'03.2" N	85°47'12.5" E
25	20°15'03.6" N	85°47'12.5" E
26	20°15'04.3" N	85°47'12.7" E
27	20°15'04.4" N	85°47'12.2" E
28	20°15'04.3" N	85°47'11.4" E
29	20°15'04.3" N	85°47'10.3" E
30	20°15'03.6" N	85°47'10.3" E
31	20°15'03.8" N	85°47'08.3" E
32	20°15'03.6" N	85°47'08.3" E
33	20°15'03.6" N	85°47'07.3" E
34	20°15'04.2" N	85°47'07.2" E
35	20°15'04.6" N	85°47'07.2" E
36	20°15'04.7" N	85°47'06.8" E

ଫୌଜା ଡୁମୁଦୁମା ପିଟା ନଂ ୪

ଥାନା ଭୁବନେଶ୍ୱର ନଂ ୪
ଡୁମୁଦୁମା ପିଟା ନଂ ୪
DUMUDUMA SHEET No. 4

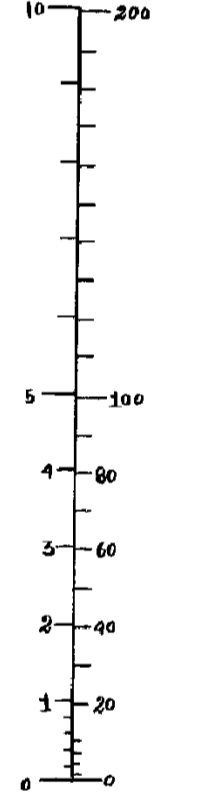
Thana Bhubaneswar No. 4

ଜିଲ୍ଲା ପୁରୀ

ସ୍କେଲ୍ ୩୨ = ୩୧୧୭୫ ଫୁଟ ୧:୩୧୧୭୫
YEAR 1982

- ନିର୍ଦ୍ଦେଶ
- ଆବୃତ୍ତି ...
 - ପୂର୍ଣ୍ଣ ...
 - କୋଣ ...
 - ପରିଧି ...
 - ଗ୍ରାମ୍ୟ କୋଣ ...
 - କରକାଳ ...
 - ବୃକ୍ଷାଙ୍କୁ ସଂକଳନ ...
 - ଦେବିମାଳା ...

Scale 2 1/2 Inches to 1 Mile
Scale of CHAINS METRES

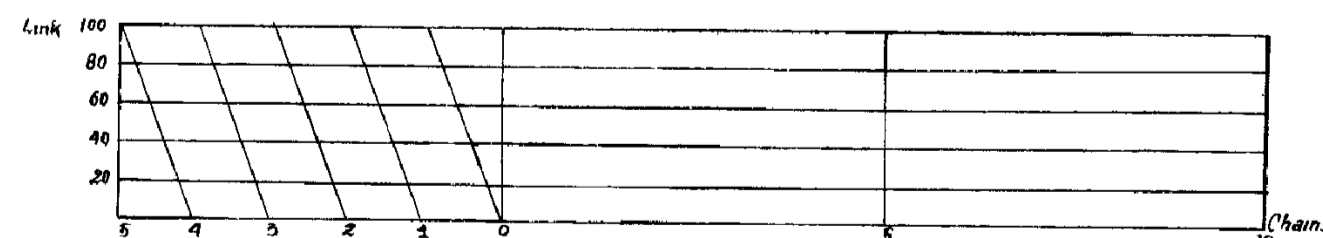


Certified that this map which has been finally prepared under sub-section (1) of section 22 of the Orissa Consolidation of Holdings and Prevention of Fragmentation of land Act 1972 has been finally published in accordance with the provision contained in sub-section (2) of the said section read with rule 26 of the Orissa Consolidation of Holdings and Prevention of Fragmentation of land Rules 1973 on 31. 3. 1982.

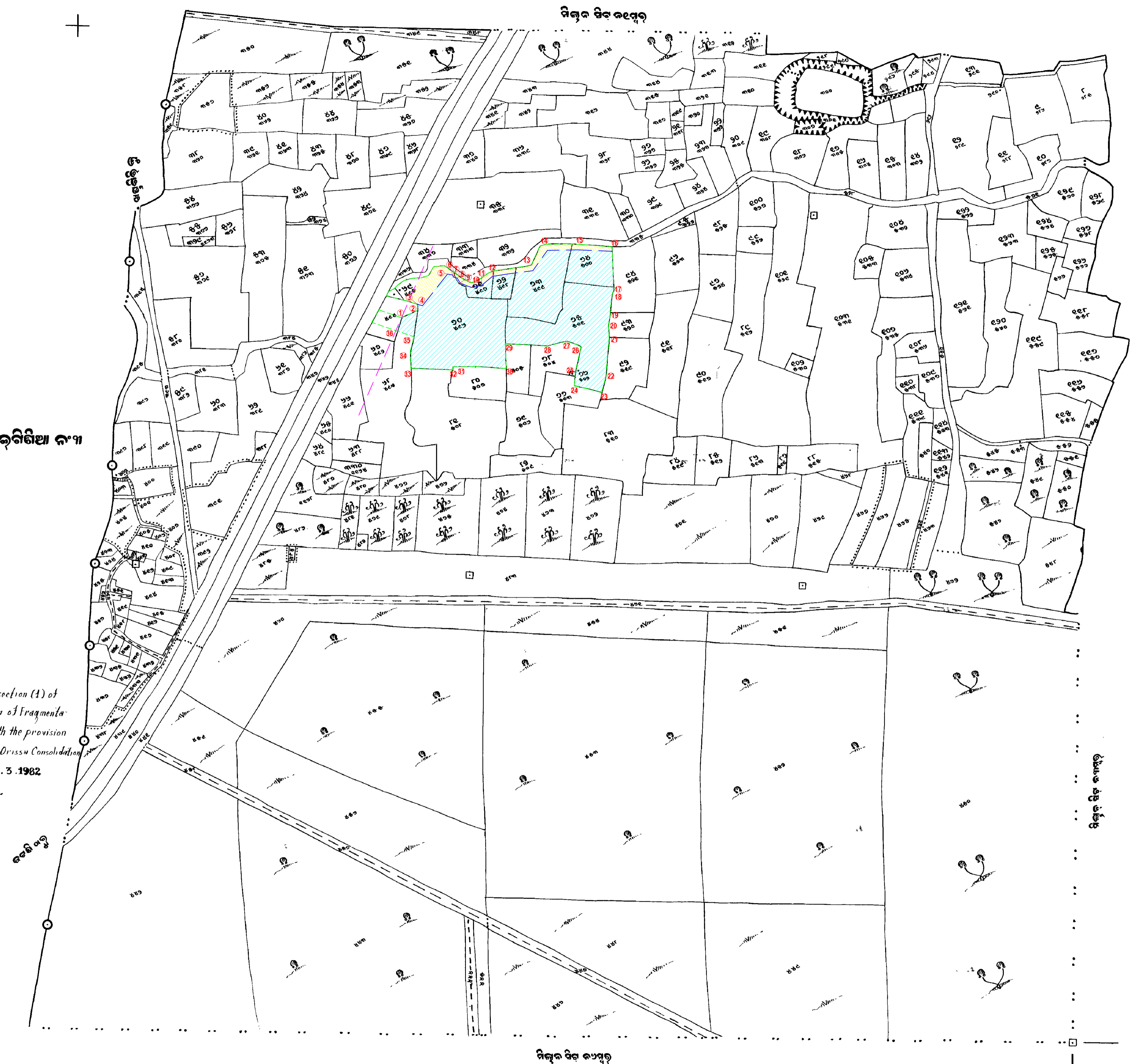
NOTES

- PLOT IN POSSESSION
- DRAIN AFFECTED AREA
- CDP ROAD AFFECTED LINE

ଉପରୋକ୍ତ ମାପ
ପୂର୍ଣ୍ଣ କରାଯାଇଛି



ଆବୃତ୍ତି ନଂ ୩



For Falcon Real Estate (P) Ltd.
Sounik Kajal Kumar Dash
Authorised Signatory

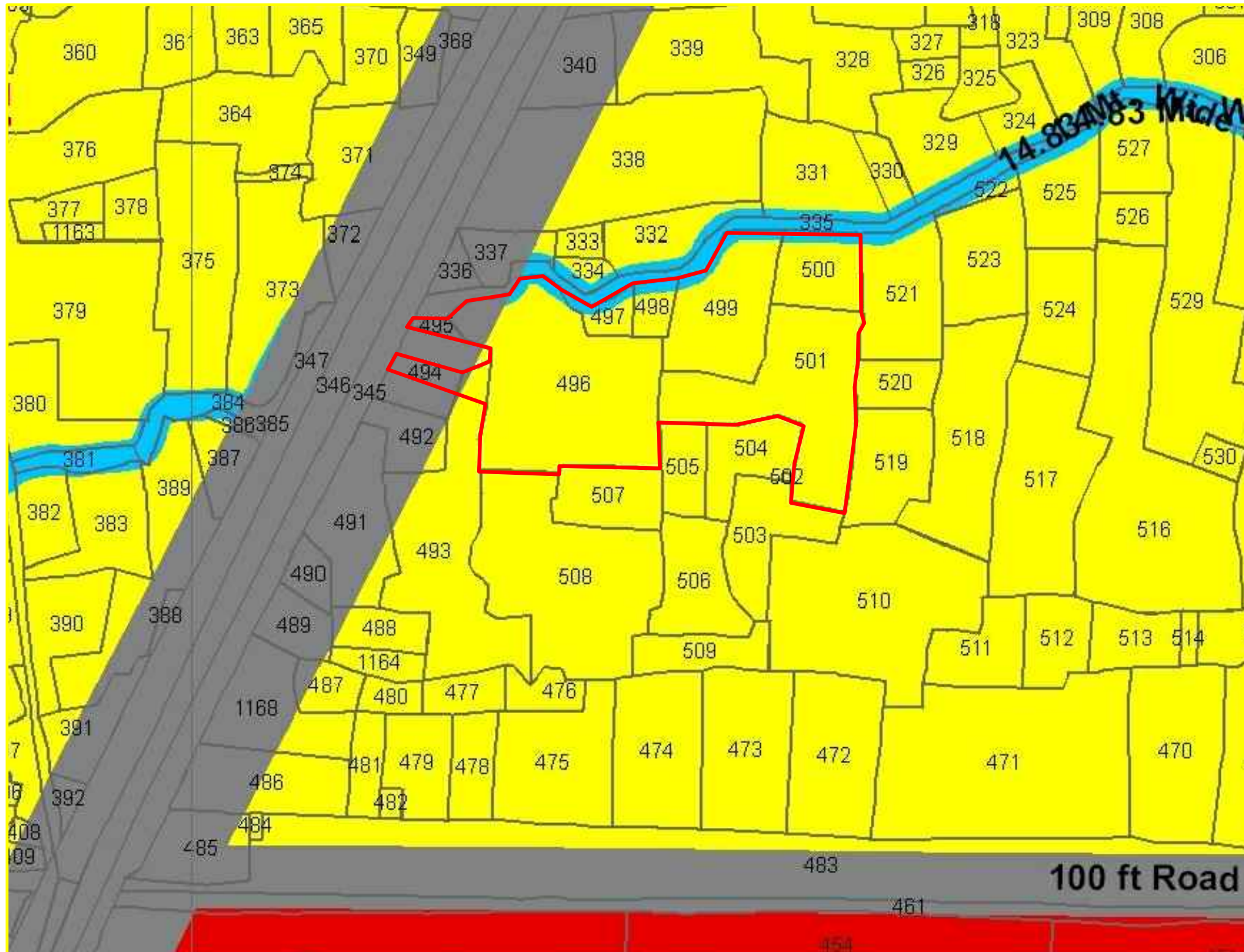
PROPOSED 4 BLOCKS (2B+G+17) RESIDENTIAL MULTI STORED APARTMENT & ONE BLOCK OF (2B+G+2) SOCIETY BUILDING OVER APARTMENT BUILDING FOR ALAKA SAMAL, SANGHAMITRA SWAIN, USHA RANI PATNAIK & FALCON REAL ESTATE PVT. LTD DIRECTOR PARTHAJEET PATTANAİK. REPRESENTED BY GPA HOLDER OF FALCON REAL ESTATE PVT. LTD ASSISTANT MANAGER (ADMIN). SRI SOUNIK KAJAL KUMAR DASH PLOT NO-499/6204, 499/6202, 499/6203, 499/6207, 499/6206, 499/4493, 499/4454, 496/2534, 496/6452, 496/6453, 496/4145, 496/6335, 497, 498, 500, 501, 493/5958 KHATA NO-432/5085, 432/5086, 432/4995, 432/2465, 432/2254, 432/5368, 432/5408, 2618, 432/4870, 432/2128, 432/5190, 432/5369, 432/5370, MOUZA :- DUMUDUMA, BHUBANESWAR, DIST.- KHORDHA.

N



PLOT NO.- 499/6204, 499/6202, 499/6203, 499/6207,
499/6206, 499/4493, 499/4454, 496/2534, 496/6452, 496/6453,
496/4145, 496/6335, 497, 498, 500, 501, 493/5958
MOUZA- JAGAMARA,
BHUBANESWAR,
DIST.- KHORDHA.

LOCATION PLAN



CLARIFICATION

It is clarified that, there are 19 Plots of Falcon Real Estate Private Limited in the area of Residential project “Falcon Tatva”. Out of the 19 Plots, the Plot No.-495 and Plot No.-494/6642 are National Highway Authority affected road as shown in the CDP of Bhubaneswar Development Area. Since, both the Plots are shown in the CDP of Bhubaneswar as NH affected plots, both are not taken in to account by the Bhubaneswar Municipal Corporation at the time of approval of project “Falcon Tatva”. But, both the plots are used as approached road to the project in future.

Submitted for kind reference.

For Falcon Real Estate (P) Ltd.

Sounik Kojal Kumar Das
Authorised Signatory

