

# ମୌଜା ରୁଦ୍ରପୁର

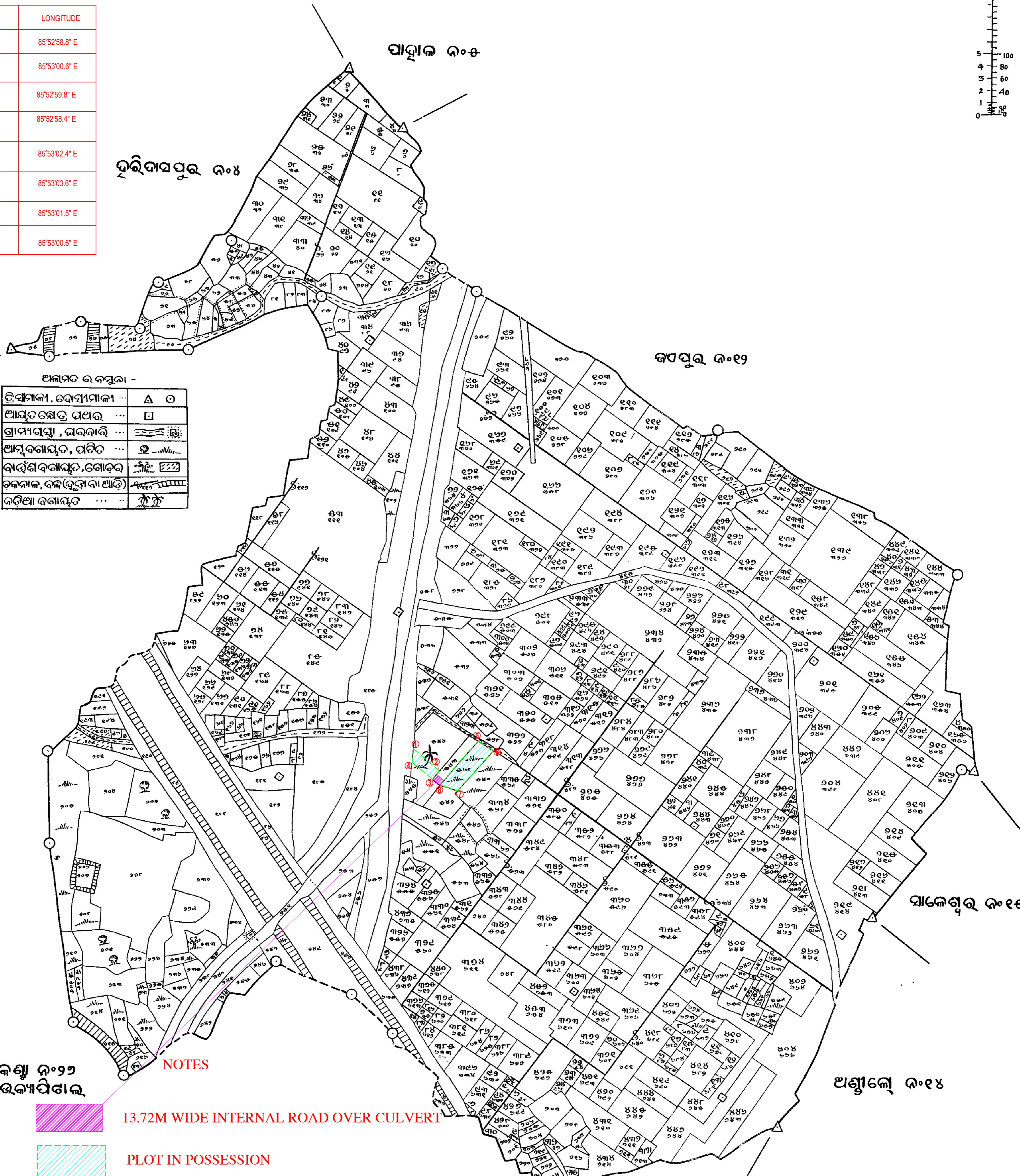
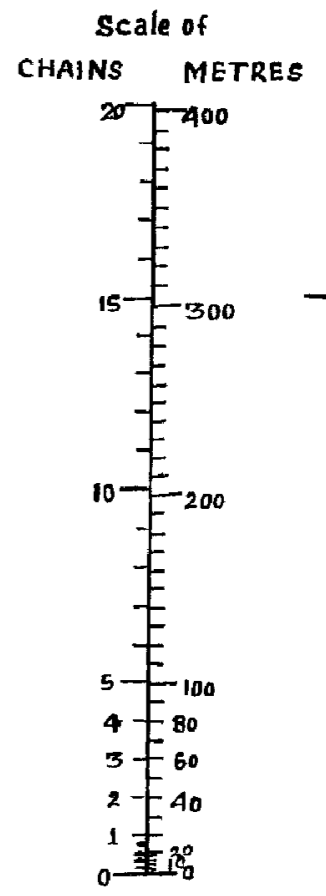
ଆନା ବାଲିଆନା ନଂ ୧୩  
ଚତୁର୍ଥ ଉପକ୍ରମ ୧୩୨୩

RUDRA PUR  
Thana Baliañā No 13

## ଜିଲ୍ଲା ପତ୍ର

ସ୍କେଲ ୧୬ଈଂ=୧ ମାଇଲ Scale 16 Inches to 1 Mile  
ସନ ୧୯୭୯-୮୦ Year 1979-80

SL. NO.	LATITUDE	LONGITUDE
1	20°19'18.7" N	85°52'58.8" E
2	20°19'17.6" N	85°53'00.6" E
3	20°19'16.9" N	85°52'59.8" E
4	20°19'17.8" N	85°52'58.4" E
5	20°19'19.3" N	85°53'02.4" E
6	20°19'18.7" N	85°53'03.6" E
7	20°19'16.3" N	85°53'01.5" E
8	20°19'16.7" N	85°53'00.6" E



ଆଇକନ ବାବଦ -

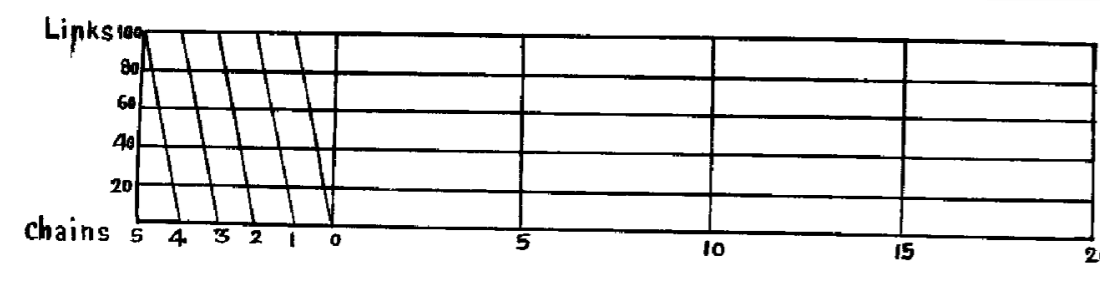
ବିଦ୍ୟାଳୟ, ବେଶ୍ୟାମାଳା ...	Δ ○
ଆୟତ୍ତର ଉପର ...	□
ଗ୍ରାମୀଣସ୍ତମ୍ଭ, ଇକାଡାରି ...	⊥
ଆୟତ୍ତର ଉପର, ଉପର ...	⊥
ବାଉଁଶ ବଗିଚା, ବୋଉ ...	⊥
ଚକ୍ରମାଳ, ବନ୍ଧ (ସୁନା ବା ଆକାଶ) ...	⊥
କମିଆ ବଗିଚା ...	⊥

ନିରୀକ୍ଷକଙ୍କ ନଂ ୨୨  
ଆନା ନିରୀକ୍ଷାପତ୍ର

- 13.72M WIDE INTERNAL ROAD OVER CULVERT
- PLOT IN POSSESSION

ଦକ୍ଷିଣ ଆଧିକାରୀଙ୍କ ନଂ ୧୫୫.୫.୧୦ ରେ ଆବେଦନରେ ବିକ ନଂ ୮୪, ୩୪୦, ୩୪୧, ୪୦୩, ୪୦୪  
ସ୍ୱଳ୍ପ ନଂ ୧୫୮, ୫୦୨, ୫୦୩, ୫୦୪ ଓ ୫୦୫ ରେ ବିକ ନଂ ୮୫, ୩୪୦, ୩୪୧, ୪୦୩, ୪୦୪  
ରୁ ବିକ ନଂ ୧୫୮, ୫୦୨, ୫୦୩, ୫୦୪ ଓ ୫୦୫ ରେ ବିକ ନଂ ୮୫, ୩୪୦, ୩୪୧, ୪୦୩, ୪୦୪

OM SWASTIK  
Managing Partner



କମିଶନାର  
ସ୍ୱଳ୍ପ ନଂ ୧୫୫.୫.୧୦ ରେ ଆବେଦନରେ ବିକ ନଂ ୮୫, ୩୪୦, ୩୪୧, ୪୦୩, ୪୦୪  
ସ୍ୱଳ୍ପ ନଂ ୧୫୮, ୫୦୨, ୫୦୩, ୫୦୪ ଓ ୫୦୫ ରେ ବିକ ନଂ ୮୫, ୩୪୦, ୩୪୧, ୪୦୩, ୪୦୪

Certified that this map which has been finally prepared under sub-section (1) of section 22 of the Orissa Consolidation of Holdings and Prevention of Fragmentation of Land Act 1972 has been finally published in accordance with the provision contained in sub-section (2) of the side section read with rule 26 of the Orissa Consolidation of Holdings and Prevention of Fragmentation of Land Rules, 1973 on

Asst. Consolidation Officer,  
Baliañā, Baliañā Circle.

**PROPOSED RESIDENTIAL S+4 CUM SHOPPING CENTER B+S+4 BUILDING OVER PLOT NO : 541 & 544/9187, KHATA NO.- 415 & 412/1069, MOUZA : RUDRAPUR, OF SMT. DEEPA MOHANTY @ MATHEWS THROUGH P.O.A M/S. OM SWASTIK REPRESENTED BY ITS MANAGING PARTNER DEEPAK TRIPATHY.**