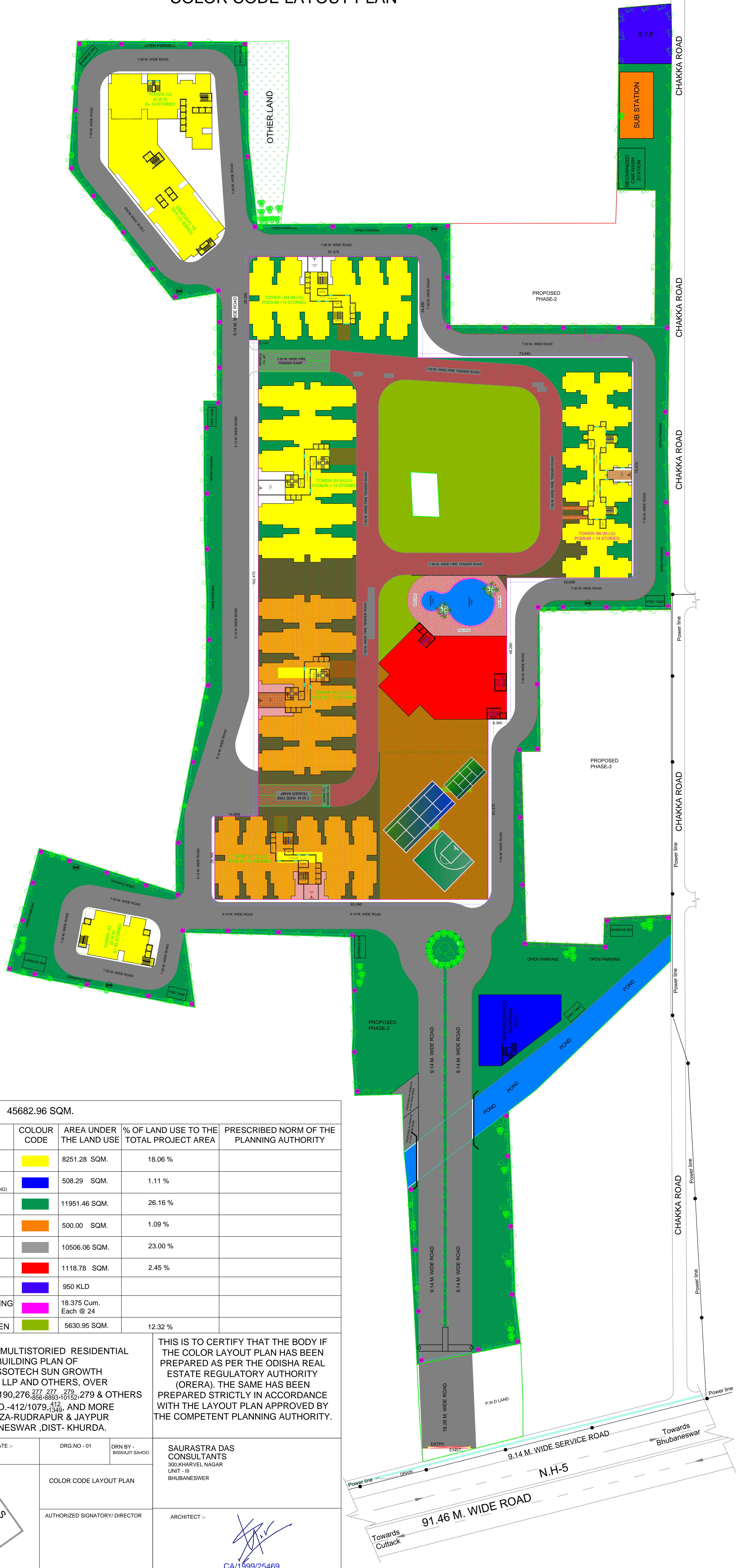



COLOR CODE LAYOUT PLAN



| PLOT AREA | | 45682.96 SQM. | | | |
|-------------------------------|------------------------------------|---|---------------------------|---|---|
| Sl. | LAND USE DESCRIPTION | COLOUR CODE | AREA UNDER THE LAND USE | % OF LAND USE TO THE TOTAL PROJECT AREA | PRESCRIBED NORM OF THE PLANNING AUTHORITY |
| 1 | RESIDENTIAL | Yellow | 8251.28 SQM. | 18.06 % | |
| 2 | COMMERCIAL (NEIGHBORHOOD SHOPPING) | Blue | 508.29 SQM. | 1.11 % | |
| 3 | PLANTATION | Green | 11951.46 SQM. | 26.16 % | |
| 4 | SUB-STATION | Orange | 500.00 SQM. | 1.09 % | |
| 5 | ROAD | Grey | 10506.06 SQM. | 23.00 % | |
| 6 | SOCIETY | Red | 1118.78 SQM. | 2.45 % | |
| 7 | STP | Purple | 950 KLD | | |
| 8 | R.W. RECHARGING PET | Pink | 18.375 Cum. Each @ 24 | | |
| 9 | PARK/ GARDEN | Light Green | 5630.95 SQM. | 12.32 % | |
| PROJECT :- | | <p>PROPOSED MULTISTORIED RESIDENTIAL BUILDING PLAN OF M/S ASSOTECH SUN GROWTH ABODE LLP AND OTHERS, OVER PLOT NO.-274/9190,276,277,278,279 & OTHERS KHATA NO.-412/1079,413,414,415 AND MORE IN MOUZA-RUDRAPUR & JAYPUR BHUBANESWAR ,DIST- KHURDA.</p> | | | |
| SCALE :- | | <p>THIS IS TO CERTIFY THAT THE BODY IF THE COLOR LAYOUT PLAN HAS BEEN PREPARED AS PER THE ODISHA REAL ESTATE REGULATORY AUTHORITY (ORERA). THE SAME HAS BEEN PREPARED STRICTLY IN ACCORDANCE WITH THE LAYOUT PLAN APPROVED BY THE COMPETENT PLANNING AUTHORITY.</p> | | | |
| DATE :- | DRG NO - 01 | DRN BY - | SAURASTRA DAS CONSULTANTS | | |
| | | DRN BY - | 300,KHARVEL NAGAR | | |
| | | DRN BY - | UNIT - III | | |
| | | DRN BY - | BHUBANESWAR | | |
| COLOR CODE LAYOUT PLAN | | ARCHITECT :- | | | |
| AUTHORIZED SIGNATORY/DIRECTOR | |  CA/1999/25469 | | | |